

REVIEW

Physiology of Thermal Therapy

## Examining the benefits of cold exposure as a therapeutic strategy for obesity and type 2 diabetes

Yoanna M. Ivanova<sup>1,2</sup> and Denis P. Blondin<sup>1,3</sup>

<sup>1</sup>Centre de Recherche du Centre Hospitalier Universitaire de Sherbrooke, Sherbrooke, Québec, Canada; <sup>2</sup>Department of Pharmacology-Physiology, Faculty of Medicine and Health Sciences, Université de Sherbrooke, Sherbrooke, Québec, Canada; and <sup>3</sup>Division of Neurology, Department of Medicine, Faculty of Medicine and Health Sciences, Université de Sherbrooke, Sherbrooke, Québec, Canada

### Abstract

The pathogenesis of metabolic diseases such as obesity and type 2 diabetes are characterized by a progressive dysregulation in energy partitioning, often leading to end-organ complications. One emerging approach proposed to target this metabolic dysregulation is the application of mild cold exposure. In healthy individuals, cold exposure can increase energy expenditure and whole body glucose and fatty acid utilization. Repeated exposures can lower fasting glucose and insulin levels and improve dietary fatty acid handling, even in healthy individuals. Despite its apparent therapeutic potential, little is known regarding the effects of cold exposure in populations for which this stimulation could benefit the most. The few studies available have shown that both acute and repeated exposures to the cold can improve insulin sensitivity and reduce fasting glycemia in individuals with type 2 diabetes. However, critical gaps remain in understanding the prolonged effects of repeated cold exposures on glucose regulation and whole body insulin sensitivity in individuals with metabolic syndrome. Much of the metabolic benefits appear to be attributable to the recruitment of shivering skeletal muscles. However, further work is required to determine whether the broader recruitment of skeletal muscles observed during cold exposure can confer metabolic benefits that surpass what has been historically observed from endurance exercise. In addition, although cold exposure offers unique cardiovascular responses for a physiological stimulus that increases energy expenditure, further work is required to determine how acute and repeated cold exposure can impact cardiovascular responses and myocardial function across a broader scope of individuals.

*cold exposure; type 2 diabetes; obesity; thermal therapy; thermogenesis*

### INTRODUCTION

Human physiological responses to cold environments have historically been investigated with the aim of understanding the risks, survival odds, and occupational requirements of armed forces personnel, emergency rescue teams, outdoor workers, adventurer-explorers, and athletes. However, for centuries, there have been claims and anecdotal evidence extolling the virtues of cold exposure, particularly resulting from cold water immersion or swimming, to improve physiological and psychological health (1). Despite the mounting anecdotal evidence and growing popularity surrounding cold water swimming, experimental evidences demonstrating the physiological mechanisms that may be responsible for these health benefits have been lacking in humans. Studies performed in rodents over the course of the last century have shown that cold exposure can produce significant metabolic benefits, such as improving insulin clearance and glucose and

fatty acid turnover (2–4). Many argued that these benefits were conferred through the adrenergic stimulation of brown adipose tissue (BAT) (5–9), a thermoregulatory organ that can be found in distinct depots near vital organs or as subpopulations of cells within white adipose tissue (WAT) [referred to as beige/brite/inducible/recruitable adipocytes (see Ref. 10 for more comprehensive review)]. Because BAT was thought to be absent in adult humans, there was little apparent interest in following-up the rodent experiments by examining these effects in humans. Despite indications decades earlier that cold exposure could improve the clearance of circulating glucose (11), it was the discovery that human BAT could be stimulated to produce heat and clear circulating substrates upon cold exposure (12–15) that provided the impetus to begin examining the therapeutic potential of such an environmental stimulus in humans. This short review will examine the metabolic benefits resulting from exposure to a compensable cold stimulus and the potential



therapeutic implications for obesity and its associated metabolic complications.

## THERAPEUTIC TARGETS OF OBESITY AND ITS ASSOCIATED METABOLIC COMPLICATIONS

Obesity is accompanied by several metabolic complications including the increased risk of developing type 2 diabetes (T2D), nonalcoholic fatty liver disease (NAFLD), and cardiovascular disease (CVD). Several pathophysiological factors are responsible for the progression of these diseases including a dysregulation in insulin secretion, insulin resistance, loss of incretin action, dysregulated lipid handling, increased renal glucose reabsorption, neurotransmitter/autonomic dysfunction, increased organ and systemic inflammation, and microvascular and macrovascular dysfunction (16). Given the multifactorial nature of these diseases, it is no surprise that lifestyle interventions that target several of these dysfunctions have shown the greatest therapeutic potential (17–20). Indeed, the metabolic benefits conferred by physical activity and exercise training specifically can be attributed to the simultaneous stimulation of multiple organ systems and signaling networks. It is also this characteristic feature that has limited the ability to develop pharmacological compounds that can mimic the full spectra of metabolic benefits resulting from physical activity and exercise training (21). However, we posit that perhaps in attempts to identify pharmacological compounds that mimic the benefits of exercise, we have overlooked the therapeutic potential of other nonpharmacological approaches, including harnessing one of the most fundamental evolutionary adaptations as endotherms—our ability to thermoregulate. Indeed, cold-stimulated thermoregulatory responses may be the closest exercise mimetic and, in some instances, may potentially even exceed the therapeutic potential of exercise training.

## METABOLIC RESPONSE TO COLD EXPOSURE

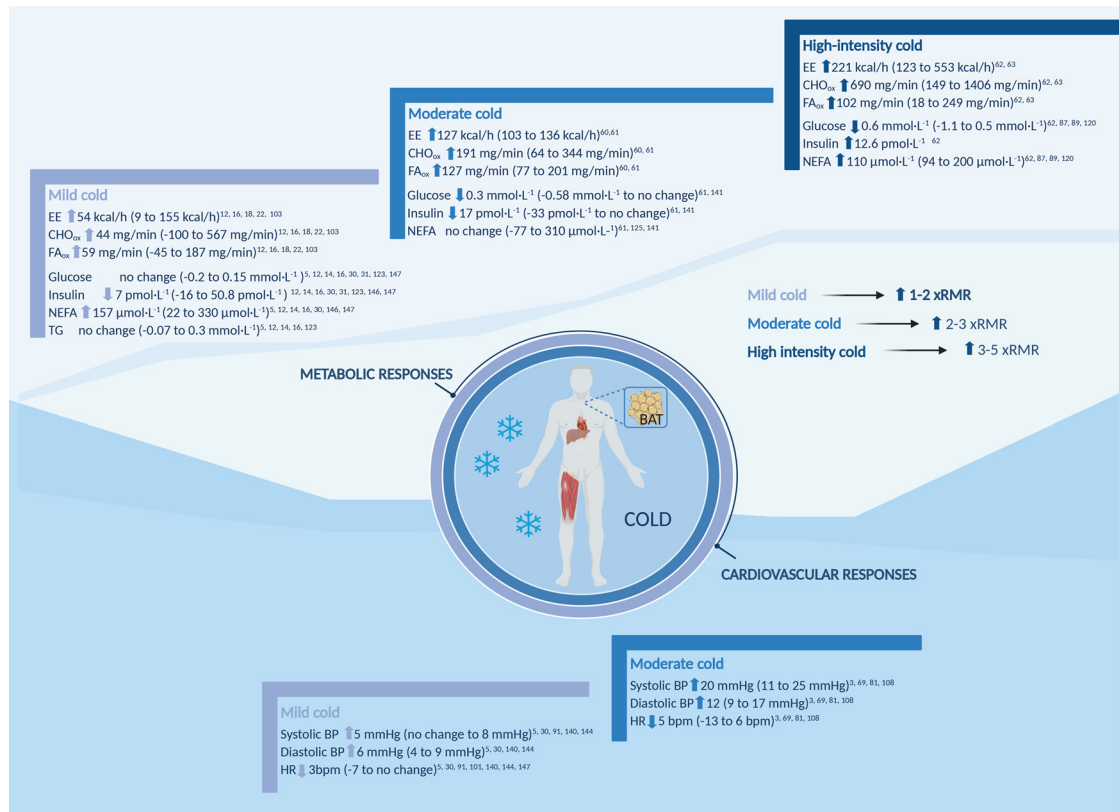
When designing experimental cold exposure studies in humans, it is important to consider the distinct metabolic, cardiovascular, and thermal perception responses elicited by different cooling stimulations. Indeed, the lack of standardization in defining the magnitude or degree of the cold exposure has raised serious challenges in the field, both for those interested in applied research as well as groups interested in understanding the metabolic and thermoregulatory responses to cold (see Ref. 22 for review). Several factors can contribute to discrepant metabolic responses, including: cooling modality [e.g., cold water immersion, cold air, liquid-conditioned suits/vests/blankets, localized cooling using blocks of ice (23)], stimulation temperature [e.g., fixed ambient temperatures (24, 25), skin temperature-clamping (26, 27), participant cold perception (28)], duration of exposure (25, 29, 30), proportion of body surface area exposed to the stimulus, participant anthropometry/body composition/morphology, and possibly training status (31, 32), acclimatization and acclimation status (28, 33–37), previous exposure experience, presence of metabolic risk factors (38, 39), and the use of certain medications

(40–42). It is therefore important to clearly describe, control for, and consider the implications of these factors in future studies.

As a means of standardizing approaches and the definitions used to describe or compare the magnitude of the cold stress between studies, we have proposed that investigators report the cold stimulus according to: 1) whether the cold stress is uncompensable (fall in core temperature) or compensable (no change in core temperature) and 2) the relative increase in metabolic rate above resting (times above resting metabolic rate,  $\times$ RMR), commonly referred to as cold-induced thermogenesis (Fig. 1). The latter is analogous to reporting exercise intensities according to relative power outputs ( $\% W_{\max}$ ) or maximal oxygen consumption ( $\% \dot{V}O_{2\max}$ ). This approach has been preferred over the use of ambient or skin temperatures (innocuous vs. noxious cold) as the physiological response to the former is dependent upon the heat transfer and convective properties of the cooling medium whereas the latter may be influenced by interindividual differences in sensitivity, density, and responsiveness of cutaneous thermoreceptors and how this sensory stimulation is processed by the central nervous system (43).

To defend against a cold stimulus, humans adapt their behavior to optimize personal comfort. In the absence of behavioral adjustments, the stimulation of cutaneous cold-sensitive thermoreceptors results in the activation of autonomic and somatic motor responses to limit heat loss to the environment and increase metabolic heat production (22, 44–46). As in all large mammals, humans can rely on their large body mass to provide a greater thermal inertia against temperature fluctuations and their large muscle mass to provide a significant source of heat production (47, 48). Under passive cooling conditions, cold-stimulated thermogenesis increases as a function of mean skin temperature (49), ranging from mild thermogenesis [1.0- to 2.0-times resting metabolic rate,  $\times$ RMR (12, 28–30, 35, 41, 47, 50–59)], to moderate [2.0–3.0  $\times$ RMR; (36, 57, 60–69)] or high thermogenic rates [3.0–5.0  $\times$ RMR; (70–74)] (Fig. 1). Mild-to-moderate thermogenesis can be recruited under compensable cold conditions, whereby core temperature can be defended for prolonged periods of time ( $\sim$ 48–72 h) (25, 29). High-thermogenic rates are typically induced only upon whole body cold-water immersion (CWI) (71) or using certain clinically developed cooling devices designed to rapidly induce hypothermia (e.g. see Ref. 75). In this context, core temperature can no longer be defended through passive thermogenesis.

The metabolic substrates used to fuel whole body heat production during cold exposure depends on the magnitude of cold-induced thermogenesis (70), endogenous substrate availability (40, 76, 77), the provision of food (25, 26, 50, 62, 64), and which thermogenic organs or metabolic pathways are recruited (24, 40, 60, 70). Although the specific metabolic rates of several major organs and tissues and their estimated contributions to resting energy expenditure under room temperature conditions has been the subject of discussion for several decades (78–82), far less is known about the relative contribution of these major organs and tissues to cold-induced thermogenesis. Studies using positron emission tomography (PET) with [ $^{15}\text{O}$ ]oxygen in combination with indirect calorimetry have shown that under mild cold stimulation



**Figure 1.** Metabolic and cardiovascular responses to cold exposure presented as a function of thermogenic rates (times resting metabolic rate, ×RMR) at mild (1–2 ×RMR), moderate (2–3 ×RMR), and high (>3 ×RMR) thermogenic rates. Data represent the mean (range) of responses reported in cited studies. Figure created with BioRender.com. BP, blood pressure; HR, heart rate; NEFA, nonesterified fatty acids.

(~1.13–1.20 × RMR), skeletal muscles account for 40%–70% of whole body oxygen consumption (47, 83). The contribution of skeletal muscles to whole body thermogenesis can only increase further with colder stimulations, but this has yet to be directly quantified using these complementary methods. Preclinical studies have also suggested that chronic cold exposure can result in the recruitment of beige/brite/inducible/recruitable adipocytes within white adipose tissue (WAT) depots (84), which may also contribute to cold-induced thermogenesis in rodents. In humans, there is currently no evidence for such recruitment even following repeated cold exposures (28, 37).

With skeletal muscles providing such a substantial contribution to thermogenesis, it is no surprise that many of the determinants of whole body fuel selection are largely dependent upon their impact on muscle metabolism. Skeletal muscles, however, demonstrate remarkable metabolic flexibility and as a result fuel selection can be modified through: 1) selective recruitment of certain muscle groups (48, 85); 2) recruitment of specific subpopulations of muscle fibers within those muscles (36, 70); and 3) recruitment of different metabolic pathways within those muscle fibers (40, 60, 76). First, deep, centrally located muscles, many of them postural and composed of predominantly type I slow-twitch oxidative fibers, are preferentially recruited during mild cold exposure (47, 48), and the reliance on larger muscle groups such as the quadriceps and pectoralis increases progressively with colder stimulations (36, 86, 87). Even within individual muscle

groups, there are indications that muscle perfusion varies according to the depth of the muscle and the temperature of the cold stimulus, with the perfusion in deep muscles such as the m. vastus intermedius increasing upon 8°C cold water immersion, whereas perfusion of superficial muscles such as the m. rectus femoris decreases upon 15°C cold water immersion (85). Whether this is unique to cold water immersion or generalizable to other cold stimuli remains to be determined but can certainly be an important determinant for muscle fuel selection.

Second, although substantial interindividual variability exists in the muscle fibers recruited to shiver in larger muscles such as the quadriceps and pectoralis, a variability that is further amplified upon colder stimulations [3.3 ×RMR (88)], this may in part be determined by the innate muscle fiber-type composition of these muscles (36). Indeed, a study examining the morphological characteristics of the m. vastus lateralis in cold-acclimatized Korean breath-hold divers compared with nonacclimatized nondivers showed a greater proportion of type IIX muscle fibers and lower proportion of IIA muscle fibers in the acclimatized divers (89). Interestingly, Danish individuals undergoing a 42-day skiing expedition across polar ice demonstrated changes in fiber composition of the m. vastus lateralis, with the proportion of type I muscle fibers decreasing and type IIX increasing (90). In both instances, it is difficult to distinguish the potential impact of the breath-hold diving or daily exercise, respectively, from the daily exposure to the cold. However, in investigating the effect of daily cold

exposure in isolation we have shown that, at least in lean healthy men, the proportion of type I muscle fibers in the m. vastus lateralis tended to increase in response to daily cold exposure and that a greater proportion of type I muscle fibers was associated with a lower shivering intensity in that muscle (36). This suggests that there might have been a progressive shift toward an increased reliance on type I oxidative muscle fibers to produce heat upon daily cold exposure, ensuring a greater reliance on lipid oxidation rather than the limited glycogen stores. Such a shift toward greater lipid utilization with prolonged cold exposure has been demonstrated in men exposed to 7.5°C air for as little as 12- to 24-h (25). Clearly, further work is needed to elucidate the determinants of shivering patterns in humans and determine whether these are fixed responses or modifiable through repeated cold exposures. It is also unclear to what extent aging, ethnicity, sex, or metabolic health may influence these responses.

Finally, without modifying the electromyography signature of shivering muscles (i.e., shivering pattern/muscle fiber recruitment), different metabolic pathways within the same recruited muscle fibers can be used to compensate for changes in muscle glycogen content (87), suppressed whole body lipolysis (40), or to account for the sexual dimorphism in substrate utilization (60). Much of this is likely related to the mounting evidence demonstrating the high-intracellular compartmentalization of skeletal muscle fiber organelles and cellular compartments. For instance, the development of modern electron microscopy techniques that generate high-resolution three-dimensional images to assess mitochondrial morphology has paved the way for the significant discoveries demonstrating the complex mitochondrial networks that are formed in human skeletal muscles (91, 92). These studies have shown that human mitochondrial networks are heterogeneous within each cell, between different cells in the same individual and between individuals, which likely provides tremendous flexibility to adapt to various metabolic conditions be it from exercise, cold exposure, prolonged fasting, or the oversupply of energy in metabolic diseases. Similarly, there are distinct subcellular populations of lipid droplets (93) and glycogen pools (94) that display different storage and utilization patterns according to their localization, the duration of an exercise bout, or the presence of disordered metabolism (e.g., type 2 diabetes, obesity). The subcellular skeletal muscle lipid and glycogen utilization patterns during cold exposure remains to be further explored, not only to build upon the recent work performed in response to exercise but to determine the therapeutic potential of daily cold exposure in the prevention or treatment of type 2 diabetes (T2D).

What has become clear over several decades of cold exposure research is that under fasted conditions, carbohydrates, lipids, and proteins can all provide the necessary substrates to fuel thermogenesis. Indeed, when one fuel source is depleted or restricted, others can compensate to maintain ATP production, shivering activity, and whole body thermogenesis (25, 40, 76). Carbohydrates appear to be the most important of these fuels. Although carbohydrates account for ~1% of total energy stores, its relative contribution to total heat production increases in parallel with increases in cold-

induced thermogenesis (Fig. 1), accounting for up to 80% of heat production at the highest shivering intensities, whereas fatty acid oxidation increases in response to cold but remains steady at ~100–200 mg/min regardless of shivering intensity, sex, carbohydrate supplementation (95), or even the suppression of white adipose tissue lipolysis (40). In addition, hyperinsulinemic-clamp-induced hypoglycemia (glycemia < 2.8 mmol/L) suppresses or inhibits cold-induced thermogenesis (96, 97). The depletion of glycogen, however, results in a compensatory increase in the utilization of proteins (76). When given a standard liquid meal (26) or a carbohydrate-rich beverage (62–64) during a mild cold exposure, the rate of fatty acid oxidation increases by 37% but carbohydrate utilization increases by approximately threefold (26) to as much as 6.6-fold (64). This dramatic increase in glucose utilization, combined with a suppression in endogenous glucose production, results in no net change in glycemia upon ingesting these carbohydrate-rich beverages during cold exposure, in contrast to what is commonly seen under ambient conditions.

In summary, compensable cold exposure increases energy expenditure in proportion to the degree of heat lost to the environment, driven primarily by the recruitment of shivering thermogenesis. This thermogenesis is fueled by increases in carbohydrate, lipid, and protein utilization with carbohydrate utilization increasing in parallel with the increases in energy expenditure. BAT and skeletal muscles are the primary sources of this heat production, with the former demonstrating remarkable mass-specific increases in thermogenesis (47, 98), glucose and nonesterified fatty acids (NEFA) uptake (12, 48), and dietary fatty acid clearance (26). However, skeletal muscles, due to their large mass, provide the greatest source of heat production and are the most significant contributor to the clearance of circulating glucose (48), NEFA (12, 38), and triglyceride-rich lipoprotein-derived fatty acids (26). It is this growing body of evidence demonstrating the relative importance of skeletal muscle thermogenesis that suggests that cold exposure may serve as a promising adjunct therapeutic strategy to dissipate excess energy and improve the metabolic profile of individuals with metabolic syndrome. Indeed, even in young and healthy individuals, relative to ambient conditions, acute cold exposure improves insulin-sensitivity (24), reduces fasting and postprandial insulin levels (26, 48), and reduces the clearance of dietary fatty acids by the heart and liver (26), whereas 4 wk of daily cold exposure improves fasting glycemia (35). This further exemplifies the therapeutic potential of cold exposure for the prevention or treatment of metabolic disease. It should be noted that a recent study has demonstrated that when given an oral glucose load for 90 min following a 1 h mild/moderate cold exposure (2× RMR), glucose and insulin areas under the curve are increased, signifying a reduced clearance of both glucose and insulin (99). However, these results are confounded by the persistent elevation in lipolysis immediately following cold exposure as well as a reduction in muscle microvascular blood flow that presents when given an oral glucose load alone compared with a mixed-meal (100). Although cold exposure research has continued to showcase its remarkable therapeutic potential, few studies have examined the effect of cold exposure in individuals with obesity or its associated complications.

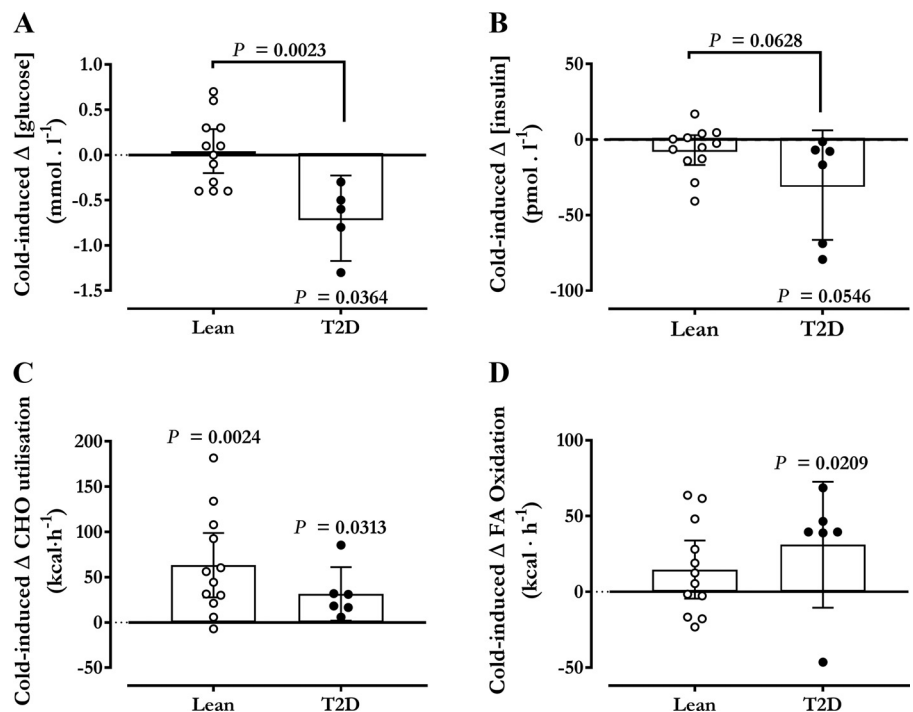
## COLD AS ADJUNCT THERAPEUTIC STRATEGY IN THE MANAGEMENT OF OBESITY AND T2D

Obesity is widely considered to result largely from a chronic imbalance between the overconsumption of energy relative to energy demands (101). However, the metabolic complications resulting from obesity are driven by energy being redirected away from energy storing organs like white adipose tissue and toward lean organs like the heart, skeletal muscles, pancreas, and liver (102–104). Indeed, the inability of white adipose tissue to regulate fatty acid flux in the fasted and fed condition, through an impairment in catecholamine-stimulated intracellular lipolysis and insulin-mediated storage of dietary fatty acids, respectively, is the hallmark of the progression toward impaired glucose tolerance (IGT) and T2D (105). Simultaneously targeting several energy homeostatic mechanisms through lifestyle interventions involving continuous, moderate-intensity endurance exercise and modest nutritional changes has been shown to be advantageous for the treatment of obesity (106), thereby reducing the risk of developing T2D and CVD (19). Epidemiological studies have shed some light on the potential impact of living in a cold climate on metabolic health, particularly on the prevalence of T2D. In the continental United States, the predicted prevalence of T2D of individuals who lived in a county with a mean annual outdoor temperature of 25°C was 1.6-times higher (12.1%) than individuals who lived in a county with a mean annual temperature of 5°C (7.6%) (107). It is unclear, however, whether these effects are independent of county variations in physical activity. In addition, the incidence of gestational diabetes rises by 6% for every 10°C increase in mean 30-day outdoor environmental temperature (108).

Living in a mildly cold environment can increase resting energy expenditure by ~20% over a span of 6 wk (109) and whole body insulin sensitivity by ~50% within a month (37), even in young healthy individuals. Together, these epidemiological and ecological studies lend support for cold exposure as an adjunct therapeutic strategy in the prevention of T2D, but prospective studies investigating the effects of acute and repeated mild cold exposure in T2D have been lacking.

To date, few studies have examined the metabolic impact of cold exposure in individuals with obesity or T2D. Recently, we showed that acute mild cold exposure increases energy expenditure by an additional 60 kcal/h of exposure, reduces glycemia by ~10%, and insulinemia by 28% over the 3 h of exposure in men with well-controlled T2D (38) (Fig. 2). This magnitude of change in glycemia is consistent with what is commonly observed during or immediately following a single bout of moderate-intensity endurance exercise (range: 1%–18%) (110–114), at a metabolic rate that is more than 2.5-times greater (50%–85%  $\dot{V}O_{2max}$  during exercise vs. 10%–17%  $\dot{V}O_{2max}$  during cold). Furthermore, at least in healthy individuals, the effect of cold exposure on glycemia and insulinemia appears to be temperature-dependent, with colder stimulations eliciting greater decreases in glycemia and insulinemia (Fig. 1). This cold exposure also stimulated catecholamine-induced intracellular triglyceride lipolysis in white adipose tissue, leading to an increased rate of fatty acid oxidation of 31 kcal/h.

The most significant knowledge gap in our understanding of the therapeutic benefits of cold exposure is in fact the lack of data examining the metabolic effects of repeated exposures to the cold in individuals with obesity or T2D. To date, only two studies have examined the effects of daily cold exposure in these populations (115, 116). Using an individualized cooling



**Figure 2.** Cold-induced changes in plasma glucose (A), insulin (B), carbohydrate (CHO) utilization (C), and fatty acid (FA) oxidation (FA) oxidation (D) in lean young men and overweight individuals with type 2 diabetes (T2D) (38).

protocol designed to restrict participant-reported shivering in men with obesity, very mild cold exposure increased energy expenditure by ~10% which resulted in a 6%–8% decrease in glycemia and no effect on insulinemia both before and after 10 days of daily mild cold exposure (14–15°C for 2–6 h/day; cold acclimation) (116). In contrast, using the same acute cold stimulation and cold acclimation intervention protocol in overweight men with T2D, daily cold exposure increased insulin-stimulated glucose disposal, with most of this additional clearance being directed toward oxidation rather than storage (115). In both studies, daily cold exposure increased basal glucose transporter (GLUT) 4 translocation in the m. vastus lateralis. This suggests that much of the cold-induced improvements in glycemia and glucose clearance are a result of shivering/contraction-mediated GLUT4 translocation resulting in an enhanced capacity to transport glucose into skeletal muscles. These two critical studies have set a valuable platform to further examine the therapeutic potential of cold exposure in individuals with metabolic dysfunctions. Further studies are needed to examine the effects of a longer intervention (at least consistent with exercise interventions), slightly colder stimulations that recruit a larger proportion of muscle groups and with a higher shivering intensity to further increase contraction-mediated GLUT4 translocation, and thereby increasing glucose transport/clearance, as well as examining these responses in women.

## COLD EXPOSURE ON CARDIOVASCULAR RESPONSES AND RISK FACTORS

In addition to the described metabolic responses, cold exposure also elicits unique cardiovascular responses that contrast with the dose-dependent increase in thermogenesis, such as modest increases in systolic blood pressure and a paradoxical decrease in heart rate. Some cross-sectional epidemiological studies have reported that while decreases in environmental temperature below 18°C are associated with increased all-cause mortality, the increased mortality risk is greatest in regions with warmer winters (117). However, only a few studies address some of the factors that may account for these associations. In the Eurowinter study (117), the cold-associated mortality risks were lower in cities with milder winters and where protective measures against cold were more commonly used. For instance, the study reported lower mortality indices with wearing of hats, anoraks (warm winter jacket), and gloves, and with those who performed more physical activity outdoors. A more recent prospective cohort study found negative correlations between BAT activity, likely a reflection of regular cold exposure, and cardiovascular risk factor levels both cross-sectionally (between low- and high-BAT activity) and longitudinally after a 5-yr follow-up (118). Using [<sup>18</sup>F]fluorodeoxyglucose ([<sup>18</sup>F]FDG) and [<sup>15</sup>O]H<sub>2</sub>O PET, the study reports negative correlations between BAT activity and future subclinical atherosclerosis, and these associations were independent of BMI. This study was the first prospective study to correlate functional measures of atherosclerosis to cold-stimulated BAT activity. Higher mortality and hospitalizations due to natural, cardiovascular, and respiratory causes were also reported in a more recent Finnish

population-based study aimed at investigating whether cold-related cardiac and respiratory symptoms predict future morbidity and mortality (119). This study reports that the development of cold-related cardiorespiratory symptoms, such as shortness of breath/coughing bouts/wheezing/increased mucus in respiratory tract or chest pain or cardiac arrhythmia, increases the risk of dying from natural causes by 38%, from cardiovascular causes by 77% (i.e., CVD, ischemic heart disease, myocardial infarction, cerebrovascular event), and from respiratory causes by 119% [i.e., chronic obstructive pulmonary disease (COPD) and bronchial asthma]. Although such studies provide valuable insight into the associations between cold temperatures and mortality risks, it is impossible to determine the causal relationship as the adverse events occurring at these environmental temperatures appear to be independent of cold-stimulated thermoregulatory responses (120). It may be, however, that underlying respiratory and cardiovascular symptoms are exacerbated by cold dry air or cold-specific activities (e.g., exertion from shoveling, cold water immersion, contrasting thermal stimuli between saunas/cold exposure).

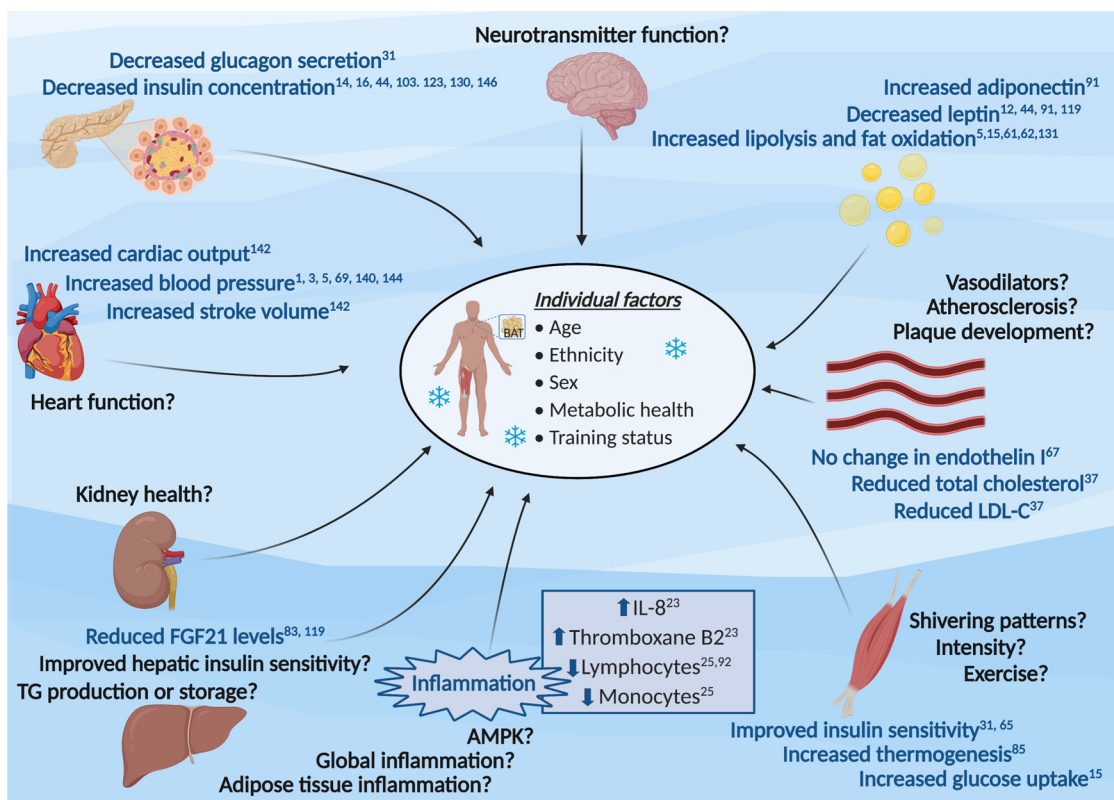
Investigations focused primarily on cardiovascular changes during cold exposure have remained somewhat limited and even fewer have reported the long-term effects of daily exposure. The cold-stimulated cardiovascular changes are largely influenced by the cooling medium (air, water, liquid-conditioned suit, and cold air inhalation), the temperature of that medium, and whether facial cooling is present. With a sufficiently strong stimulus, cold exposure increases autonomic activity, increasing peripheral vasoconstriction and in turn increasing arterial blood pressure (BP) and mean arterial pressure (MAP) while decreasing heart rate (HR). The changes in cardiovascular responses during cold exposure follow a dose-response relationship, with mild cold eliciting smaller changes in responses than more moderate cold exposures (Fig. 1). For example, mild cold increases systolic BP by ~4–8 mmHg (or ~3%–6%) (41, 58, 121–124), whereas moderate cold exposure increases systolic BP by ~11–25 mmHg (or ~9%–20%) (125–128). Mild cold also increases diastolic BP by ~4–9 mmHg (or ~6%–14%) (41, 52, 58, 121–124, 129, 130), whereas moderate cold exposure increases diastolic BP by ~9–17 mmHg (or ~12%–20%) (125–128). Furthermore, although data from different populations is limited, studies suggest that this increase in blood pressure is more pronounced in some populations. For example, in older and hypertensive individuals who are exposed to mild cold, systolic BP increases by ~11%–15% (123, 130, 131), whereas diastolic BP increases by ~9%–10% (130, 131). Such an increase in systolic and diastolic BP may be perceived as potentially increasing the risks of experiencing acute cardiovascular events; however, it is important to note that these increases are of the same magnitude as what is observed during low-intensity aerobic exercise (132), a cornerstone in cardiac rehabilitation. In addition, although regular physical activity is associated with significant reductions in resting blood pressure (133), studies investigating the long-term effects of cold exposure on resting blood pressure are currently lacking.

Although exercise and cold exposure are often seen as analogous metabolic processes (134), one of the most profound differences between the two metabolic conditions is reflected in the heart rate response. For instance, in contrast to exercise, heart rate either does not change (52, 58, 122, 130,

131) or decreases by ~3–7 beats/min (~3%–9% decrease) in response to mild cold exposure in either young or older individuals (121, 123, 124). During cold exposure that elicits a moderate increase in thermogenesis, heart rate decreases even further, falling by ~5–13 beats/min (~8%–22%) in both healthy and hypertensive individuals (125, 127, 128). Whereas exercise-induced increases in cardiac output is primarily driven by increases in heart rate, cold-induced increases in cardiac output appears to be driven primarily by increases in stroke volume. For example, mild cold exposure (ambient temperature, 10°C) results in a ~10% increase in cardiac output (135) regardless of age or sex, whereas a more moderate cold exposure (ambient temperature, 4–6°C) increases cardiac output by ~65%–150% (126, 136). The temperature-dependent increase in cardiac output is driven primarily by the temperature-dependent increases in stroke volume, which increases by ~15%–20% under mild cold exposure and by up to ~40%–77% at a more moderate cold (126, 135, 136), as a result of the redistribution of blood from the periphery to the central circulation (126) increasing the central venous pressure (137). Whether the cold-induced decrease in HR is

driven by these changes in stroke volume, baroreceptor reflex, or a combination of both remains to be fully elucidated.

In summary, although there has been considerable interest in understanding the effects of cold exposure on cardiovascular responses, much of the currently available data is derived from epidemiological studies that fail to account for many of the important confounding factors associated with cooler environmental temperatures. These include potential changes in lifestyle behaviors such as reduced physical activity patterns but may also include changes in domestic responsibilities that accompany colder environmental temperatures, such as shoveling, which may expose individuals with a higher-risk of cardiorespiratory complications (i.e., at risk of myocardial infarctions, CVD, COPD, arrhythmias, asthma, cerebrovascular events) to activities that may exacerbate their condition. Controlled, prospective studies which show very limited increases in blood pressure and even decreases in heart rate in response to cold exposure suggest that cold per se is unlikely to be the primary cause of the seasonal associations with increases



**Figure 3.** Therapeutic benefits of cold exposure according to the pathophysiological factors responsible for the progression of metabolic diseases. Previously reported evidence of responses to an acute bout of cold exposure is shown in blue whereas as research gaps are shown in black. A small body of literature suggests that cold exposure decreases leptin and increases adiponectin levels (40, 124, 138–141). Cold exposure also increases whole body lipolysis and fatty acid oxidation (40, 61, 67, 70, 140). Limited data suggest that cold exposure has no effect on angiotensin II (140) or endothelin I (142), one of the most potent vasoconstrictors, but whether cold impacts atherosclerosis and plaque development remains unclear (143). Cold exposure is shown to increase peripheral insulin sensitivity (115) as well as thermogenesis and glucose uptake in muscles (38, 48). However, it is not known what the determinants of shivering patterns are or whether they are modifiable through repeated exposures. It is also not clear to what extent individual factors such as aging, ethnicity, sex, metabolic health, or training status impact these responses. Cold exposure impacts inflammation but whether this results in a reduction in global or tissue-specific inflammation remains unknown (144–146). Furthermore, it remains unclear whether cold exposure affects triglyceride production or storage in the liver. There is a small body of literature that suggests that cold exposure leads to changes in the secretion of several hormones including insulin (139), glucagon (147), ghrelin (40, 147), and FGF21 (138, 148). Whether cold exposure has any effects on kidney, heart (135), and neurotransmitter function remains to be elucidated. Figure created with BioRender.com.

in cardiovascular complications and all-cause mortality. Clearly, further work is needed with controlled experimental conditions to more carefully assess how cold exposure influences cardiovascular responses and myocardial function.

## CONCLUSIONS

Historically, cold exposure research has been driven primarily by interests and concerns identified in the field by armed forces, emergency rescue teams, and generally outdoor workers and adventurers. Consequently, until recently, our understanding of the metabolic and cardiovascular impact of cold exposure has been limited to more extreme cold conditions. The (re)discovery of BAT in adult humans in 2007–2009 shifted the focus of cold exposure research toward examining the potential metabolic benefits of mild exposures to the cold. In that time, the field has grown dramatically and there has been mounting evidence demonstrating that cold exposure, through the stimulation of thermogenic processes and in particular the recruitment of shivering skeletal muscles, can improve glucose homeostasis and insulin sensitivity, increase the rate of glucose and fatty acid oxidation, and modify the organ-specific handling of dietary fatty acids compared with ambient conditions. Although the findings to date have been quite remarkable, there is also very limited scope largely focusing on young, lean, and healthy men. There is a significant gap in understanding the role of age, sex, race, and training status on these metabolic and cardiovascular responses to cold exposure (Fig. 3). In addition, although the evidence points strongly toward cold exposure being a promising adjunct or complementary therapeutic strategy to counteract the development of obesity or the progression of T2D, very few studies have examined acute cold-induced metabolic responses in these populations. Even fewer have investigated the impact of daily cold exposure as an intervention in these populations, despite the various claims strongly suggesting its therapeutic potential. Further work is needed to determine the frequency, minimal intensity, duration, and type of cold exposure required to elicit meaningful metabolic changes in individuals with metabolic syndrome and whether there may be any contraindications to performing such interventions in certain populations. Future work should also broaden the characterization of cold responses in order to better appreciate its therapeutic potential in targeting several of the pathophysiological factors responsible for the progression of metabolic diseases. The integrative simultaneous stimulation of multiple organ systems resulting from cold exposure makes it ideally suited as a nonpharmacological exercise mimetic. This could thereby further expand the choices available in our movement menu to treat or prevent obesity and its associated metabolic complications.

## GRANTS

D. P. Blondin is supported by a Fonds de Recherche du Québec-Santé (FRQS) J1 salary award. Original work from our group in the field of human cold exposure has been funded by grants from the Canadian Diabetes Association, the Canadian Institutes of Health Research (Grant No. 299962) and the Natural Sciences and Engineering Research Council of Canada (RGPIN-

2016-05291). Work in this laboratory is currently funded by the Natural Sciences and Engineering Research Council of Canada (RGPIN-2019-05813) and the FRQS.

## DISCLOSURES

D. P. Blondin holds the GSK Chair in Diabetes of Université de Sherbrooke. None of the other authors has any conflicts of interest, financial or otherwise, to disclose.

## AUTHOR CONTRIBUTIONS

Y.M.I. and D.P.B. conceived and designed research; Y.M.I. and D.P.B. prepared figures; Y.M.I. and D.P.B. drafted manuscript; Y.M.I. and D.P.B. edited and revised manuscript; Y.M.I. and D.P.B. approved final version of manuscript.

## REFERENCES

1. Tipton MJ, Collier N, Massey H, Corbett J, Harper M. Cold water immersion: kill or cure? *Exp Physiol* 102: 1335–1355, 2017. doi:10.1113/EP086283.
2. Ingle DJ, Meeks RC, Humphrey LM. Effects of environment on diabetes: a study of partially-depancreatized rats exposed to cold. *Diabetes* 2: 122–124, 1953. doi:10.2337/diab.2.2.122.
3. Vallerand AL, Lupien J, Bukowiecki LJ. Interactions of cold exposure and starvation on glucose tolerance and insulin response. *Am J Physiol Endocrinol Metab* 245: E575–E581, 1983. doi:10.1152/ajpendo.1983.245.6.E575.
4. Smith OL, Davidson SB. Shivering thermogenesis and glucose uptake by muscles of normal or diabetic rats. *Am J Physiol Regul Integr Comp Physiol* 242: R109–R115, 1982. doi:10.1152/ajpregu.1982.242.1.R109.
5. Zaror-Behrens G, Himms-Hagen J. Cold-stimulated sympathetic activity in brown adipose tissue of obese (ob/ob) mice. *Am J Physiol Endocrinol Metab* 244: E361–E366, 1983. doi:10.1152/ajpendo.1983.244.4.E361.
6. Deshaies Y, Richard D, Arnold J. Lipoprotein lipase in adipose tissue of exercise-trained, cold-acclimated rats. *Am J Physiol Endocrinol Metab* 251: E251–E257, 1986. doi:10.1152/ajpendo.1986.251.3.E251.
7. Shimizu Y, Nikami H, Tsukazaki K, Machado UF, Yano H, Seino Y, Saito M. Increased expression of glucose transporter GLUT-4 in brown adipose tissue of fasted rats after cold exposure. *Am J Physiol Endocrinol Metab* 264: E890–E895, 1993. doi:10.1152/ajpendo.1993.264.6.E890.
8. Liu X, Pérusse F, Bukowiecki LJ. Chronic norepinephrine infusion stimulates glucose uptake in white and brown adipose tissues. *Am J Physiol Regul Integr Comp Physiol* 266: R914–R920, 1994. doi:10.1152/ajpregu.1994.266.3.R914.
9. Ma SW, Foster DO. Uptake of glucose and release of fatty acids and glycerol by rat brown adipose tissue in vivo. *Can J Physiol Pharmacol* 64: 609–614, 1986. doi:10.1139/y86-101.
10. Betz MJ, Enerback S. Targeting thermogenesis in brown fat and muscle to treat obesity and metabolic disease. *Nat Rev Endocrinol* 14: 77–87, 2018. doi:10.1038/nrendo.2017.132.
11. Vallerand AL, Pérusse F, Bukowiecki LJ. Cold exposure potentiates the effect of insulin on in vivo glucose uptake. *Am J Physiol Endocrinol Metab* 253: E179–E186, 1987. doi:10.1152/ajpendo.1987.253.2.E179.
12. Ouellet V, Labbe SM, Blondin DP, Phoenix S, Guerin B, Haman F, Turcotte EE, Richard D, Carpentier AC. Brown adipose tissue oxidative metabolism contributes to energy expenditure during acute cold exposure in humans. *J Clin Invest* 122: 545–552, 2012. doi:10.1172/JCI60433.
13. Virtanen KA, Lidell ME, Orava J, Heglind M, Westergren R, Niemi T, Taittonen M, Laine J, Savisto NJ, Enerbäck S, Nuutila P. Functional brown adipose tissue in healthy adults. *N Engl J Med* 360: 1518–1525, 2009 [Erratum in *N Engl J Med* 361: 1123, 2009]. doi:10.1056/NEJMoa0808949.
14. van Marken Lichtenbelt WD, Vanhomerig JW, Smulders NM, Drossaerts JM, Kemerink GJ, Bouvy ND, Schrauwen P, Teule GJ.

- Cold-activated brown adipose tissue in health men. *N Engl J Med* 360: 1500–1508, 2009. doi:10.1056/NEJMoa0808718.
15. Saito M, Okamatsu-Ogura Y, Matsushita M, Watanabe K, Yoneshiro T, Nio-Kobayashi J, Iwanaga T, Miyagawa M, Kameya T, Nakada K, Kawai Y, Tsujisaki M. High incidence of metabolically active brown adipose tissue in healthy adult humans: effects of cold exposure and adiposity. *Diabetes* 58: 1526–1531, 2009. doi:10.2337/db09-0530.
  16. DeFronzo RA, Ferrannini E, Groop L, Henry RR, Herman WH, Holst JJ, Hu FB, Kahn CR, Raz I, Shulman GI, Simonson DC, Testa MA, Weiss R. Type 2 diabetes mellitus. *Nat Rev Dis Primers* 1: 15019, 2015. doi:10.1038/nrdp.2015.19.
  17. Knowler WC, Barrett-Connor E, Fowler SE, Hamman RF, Lachin JM, Walker EA, Nathan DM. Reduction in the incidence of type 2 diabetes with lifestyle intervention or metformin. *N Engl J Med* 346: 393–403, 2002. doi:10.1056/NEJMoa012512.
  18. Knowler WC, Fowler SE, Hamman RF, Christophi CA, Hoffman HJ, Brenneman AT, Brown-Friday JO, Goldberg R, Venditti E, Nathan DM. 10-year follow-up of diabetes incidence and weight loss in the diabetes prevention program outcomes study. *Lancet* 374: 1677–1686, 2009. doi:10.1016/S0140-6736(09)61457-4.
  19. Orchard TJ, Temprosa M, Barrett-Connor E, Fowler SE, Goldberg RB, Mather KJ, Marcovina SM, Montez M, Ratner RE, Saudek CD, Sherif H, Watson KE. Long-term effects of the diabetes prevention program interventions on cardiovascular risk factors: a report from the DPP outcomes study. *Diabet Med* 30: 46–55, 2013. doi:10.1111/j.1464-5491.2012.03750.x.
  20. Mingrone G, Panunzi S, De Gaetano A, Guidone C, Iaiconelli A, Capristo E, Chamseddine G, Bornstein SR, Rubino F. Metabolic surgery versus conventional medical therapy in patients with type 2 diabetes: 10-year follow-up of an open-label, single-centre, randomised controlled trial. *Lancet* 397: 293–304, 2021. doi:10.1016/S0140-6736(20)32649-0.
  21. Hawley JA, Joyner MJ, Green DJ. Mimicking exercise: what matters most and where to next? *J Physiol* 599: 791–802, 2021. doi:10.1113/JP278761.
  22. Blondin DP, Haman F. Shivering and nonshivering thermogenesis in skeletal muscles. *Handb Clin Neurol* 156: 151–171, 2018. doi:10.1016/B978-0-444-63912-7.00010-2.
  23. Haman F. Shivering in the cold: from mechanisms of fuel selection to survival. *J Appl Physiol* (1985) 100: 1702–1708, 2006. doi:10.1152/jappphysiol.01088.2005.
  24. Blondin DP, Nielsen S, Kuipers EN, Severinsen MC, Jensen VH, Miard S, Jespersen NZ, Kooijman S, Boon MR, Fortin M, Phoenix S, Frisch F, Guérin B, Turcotte ÉE, Haman F, Richard D, Picard F, Rensen PCN, Scheele C, Carpentier AC. Human brown adipocyte thermogenesis is driven by  $\beta_2$ -AR stimulation. *Cell Metab* 32: 287–300.e7, 2020. doi:10.1016/j.cmet.2020.07.005.
  25. Haman F, Mantha OL, Cheung SS, DuCharme MB, Taber M, Blondin DP, McGarr GW, Hartley GL, Hynes Z, Basset FA. Oxidative fuel selection and shivering thermogenesis during a 12- and 24-h cold-survival simulation. *J Appl Physiol* (1985) 120: 640–648, 2016. doi:10.1152/jappphysiol.00540.2015.
  26. Blondin DP, Tingelstad HC, Noll C, Frisch F, Phoenix S, Guerin B, Turcotte EE, Richard D, Haman F, Carpentier AC. Dietary fatty acid metabolism of brown adipose tissue in cold-acclimated men. *Nat Commun* 8: 14146, 2017. doi:10.1038/ncomms14146.
  27. Gordon K, Blondin DP, Friesen BJ, Tingelstad HC, Kenny GP, Haman F. Seven days of cold acclimation substantially reduces shivering intensity and increases nonshivering thermogenesis in adult humans. *J Appl Physiol* (1985) 126: 1598–1606, 2019. doi:10.1152/jappphysiol.01133.2018.
  28. van der Lans AA, Hoeks J, Brans B, Vijgen GH, Visser MG, Vosselman MJ, Hansen J, Jorgensen JA, Wu J, Mottaghy FM, Schrauwen P, van Marken Lichtenbelt WD. Cold acclimation recruits human brown fat and increases nonshivering thermogenesis. *J Clin Invest* 123: 3395–3403, 2013. doi:10.1172/JCI68993.
  29. Wijers SL, Saris WH, van Marken Lichtenbelt WD. Individual thermogenic responses to mild cold and overfeeding are closely related. *J Clin Endocrinol Metab* 92: 4299–4305, 2007. doi:10.1210/jc.2007-1065.
  30. Castellani JW, Stulz DA, Degroot DW, Blanchard LA, Cadarette BS, Nindl BC, Montain SJ. Eighty-four hours of sustained operations alter thermoregulation during cold exposure. *Med Sci Sports Exerc* 35: 175–181, 2003. doi:10.1097/00005768-200301000-00026.
  31. Adams T, Heberling EJ. Human physiological responses to a standardized cold stress as modified by physical fitness. *J Appl Physiol* 13: 226–230, 1958. doi:10.1152/jappphysiol.1958.13.2.226.
  32. Bittel JH, Nonotte-Varly C, Livecchi-Gonnot GH, Savourey GL, Hanniquet AM. Physical fitness and thermoregulatory reactions in a cold environment in men. *J Appl Physiol* (1985) 65: 1984–1989, 1988. doi:10.1152/jappphysiol.1988.65.5.1984.
  33. Davis TR, Johnston DR. Seasonal acclimatization to cold in man. *J Appl Physiol* 16: 231–234, 1961. doi:10.1152/jappphysiol.1961.16.2.231.
  34. Davis TR. Chamber cold acclimatization in man. *J Appl Physiol* 16: 1011–1015, 1961. doi:10.1152/jappphysiol.1961.16.6.1011.
  35. Blondin DP, Labbé SM, Tingelstad HC, Noll C, Kunach M, Phoenix S, Guérin B, Turcotte ÉE, Carpentier AC, Richard D, Haman F. Increased brown adipose tissue oxidative capacity in cold-acclimated humans. *J Clin Endocrinol Metab* 99: E438–E446, 2014. doi:10.1210/jc.2013-3901.
  36. Blondin DP, Daoud A, Taylor T, Tingelstad HC, Bezaire V, Richard D, Carpentier AC, Taylor AW, Harper ME, Aguer C, Haman F. Four-week cold acclimation in adult humans shifts uncoupling thermogenesis from skeletal muscles to brown adipose tissue. *J Physiol* 595: 2099–2113, 2017. doi:10.1113/JP273395.
  37. Lee P, Smith S, Linderman J, Courville AB, Brychta RJ, Dieckmann W, Werner CD, Chen KY, Celi FS. Temperature-acclimated brown adipose tissue modulates insulin sensitivity in humans. *Diabetes* 63: 3686–3698, 2014. doi:10.2337/db14-0513.
  38. Blondin DP, Labbe SM, Noll C, Kunach M, Phoenix S, Guerin B, Turcotte EE, Haman F, Richard D, Carpentier AC. Selective impairment of glucose but not fatty acid or oxidative metabolism in brown adipose tissue of subjects with type 2 diabetes. *Diabetes* 64: 2388–2397, 2015. doi:10.2337/db14-1651.
  39. van Marken Lichtenbelt W, Hanssen M, Pallubinsky H, Kingma B, Schellen L. Healthy excursions outside the thermal comfort zone. *Build Res Inform* 45: 819–827, 2017. doi:10.1080/09613218.2017.1307647.
  40. Blondin DP, Frisch F, Phoenix S, Guerin B, Turcotte EE, Haman F, Richard D, Carpentier AC. Inhibition of intracellular triglyceride lipolysis suppresses cold-induced brown adipose tissue metabolism and increases shivering in humans. *Cell Metab* 25: 438–447, 2017. doi:10.1016/j.cmet.2016.12.005.
  41. Vosselman MJ, van der Lans AA, Brans B, Wierts R, van Baak MA, Schrauwen P, van Marken Lichtenbelt WD. Systemic beta-adrenergic stimulation of thermogenesis is not accompanied by brown adipose tissue activity in humans. *Diabetes* 61: 3106–3113, 2012. doi:10.2337/db12-0288.
  42. Komulainen S, Tähtinen T, Rintamäki H, Virokannas H, Keinänen-Kiukaanniemi S. Blood pressure responses to whole-body cold exposure: effect of carvedilol. *Eur J Clin Pharmacol* 56: 637–642, 2000. doi:10.1007/s002280000208.
  43. Ran C, Hoon MA, Chen X. The coding of cutaneous temperature in the spinal cord. *Nat Neurosci* 19: 1201–1209, 2016. doi:10.1038/nn.4350.
  44. Nakamura K. Afferent pathways for autonomic and shivering thermoeffectors. *Handb Clin Neurol* 156: 263–279, 2018. doi:10.1016/B978-0-444-63912-7.00016-3.
  45. Morrison SF. Efferent neural pathways for the control of brown adipose tissue thermogenesis and shivering. *Handb Clin Neurol* 156: 281–303, 2018. doi:10.1016/B978-0-444-63912-7.00017-5.
  46. Greaney JL, Alexander LM, Kenney WL. Sympathetic control of reflex cutaneous vasoconstriction in human aging. *J Appl Physiol* (1985) 119: 771–782, 2015. doi:10.1152/jappphysiol.00527.2015.
  47. U Din M, Raiko J, Saari T, Kudomi N, Tolvanen T, Oikonen V, Teuho J, Sipilä HT, Savisto N, Parkkola R, Nuutila P, Virtanen KA. Human brown adipose tissue ([<sup>15</sup>O]O<sub>2</sub>) PET imaging in the presence and absence of cold stimulus. *Eur J Nucl Med Mol Imaging* 43: 1878–1886, 2016. doi:10.1007/s00259-016-3364-y.
  48. Blondin DP, Labbe SM, Phoenix S, Guerin B, Turcotte EE, Richard D, Carpentier AC, Haman F. Contributions of white and brown adipose tissues and skeletal muscles to acute cold-induced metabolic responses in healthy men. *J Physiol* 593: 701–714, 2015. doi:10.1113/jphysiol.2014.283598.

49. Haman F, Blondin DP. Shivering thermogenesis in humans: origin, contribution and metabolic requirement. *Temperature (Austin)* 4: 217–226, 2017. doi:10.1080/23328940.2017.1328999.
50. Gosselin C, Haman F. Effects of green tea extracts on non-shivering thermogenesis during mild cold exposure in young men. *Br J Nutr* 110: 282–288, 2013. doi:10.1017/S0007114512005089.
51. Chondronikola M, Volpi E, Borsheim E, Porter C, Annamalai P, Enerback S, Lidell ME, Saraf MK, Labbe SM, Hurren NM, Yfanti C, Chao T, Andersen CR, Cesani F, Hawkins H, Sidossis LS. Brown adipose tissue improves whole-body glucose homeostasis and insulin sensitivity in humans. *Diabetes* 63: 4089–4099, 2014. doi:10.2337/db14-0746.
52. Wijers SL, Schrauwen P, van Baak MA, Saris WH, van Marken Lichtenbelt WD. Beta-adrenergic receptor blockade does not inhibit cold-induced thermogenesis in humans: possible involvement of brown adipose tissue. *J Clin Endocrinol Metab* 96: E598–E605, 2011. doi:10.1210/jc.2010-1957.
53. van Ooijen AM, van Marken Lichtenbelt WD, van Steenhoven AA, Westerterp KR. Cold-induced heat production preceding shivering. *Br J Nutr* 93: 387–391, 2005. doi:10.1079/bjn20041362.
54. Glickman-Weiss EL, Nelson AG, Hearon CM, Windhauser M, Heltz D. The thermogenic effect of a carbohydrate feeding during exposure to 8, 12 and 27 degrees C. *Eur J Appl Physiol* 68: 291–297, 1994. doi:10.1007/BF00571445.
55. Vallerand AL, Jacobs I. Rates of energy substrates utilization during human cold exposure. *Eur J Appl Physiol Occup Physiol* 58: 873–878, 1989. doi:10.1007/BF02332221.
56. Glickman-Weiss EL, Nelson AG, Hearon CM, Vasanthakumar SR, Stringer BT, Shulman SS. Does feeding regime affect physiologic and thermal responses during exposure to 8, 20, and 27°C? *Eur J Appl Physiol* 67: 30–34, 1993. doi:10.1007/BF00377700.
57. Tipton MJ, Franks GM, Meneilly GS, Mekjavic IB. Substrate utilisation during exercise and shivering. *Eur J Appl Physiol* 76: 103–108, 1997. doi:10.1007/s004210050220.
58. Chen KY, Brychta RJ, Linderman JD, Smith S, Courville A, Dieckmann W, Herscovitch P, Millo CM, Remaley A, Lee P, Celi FS. Brown fat activation mediates cold-induced thermogenesis in adult humans in response to a mild decrease in ambient temperature. *J Clin Endocrinol Metab* 98: E1218–E1223, 2013. doi:10.1210/jc.2012-4213.
59. Young AJ, Castellani JW, O'Brien C, Shippee RL, Tikuisis P, Meyer LG, Blanchard LA, Kain JE, Cadarette BS, Sawka MN. Exertional fatigue, sleep loss, and negative energy balance increase susceptibility to hypothermia. *J Appl Physiol* 85: 1210–1217, 1998. doi:10.1152/jappl.1998.85.4.1210.
60. Blondin DP, Maneshi A, Imbeault MA, Haman F. Effects of the menstrual cycle on muscle recruitment and oxidative fuel selection during cold exposure. *J Appl Physiol (1985)* 111: 1014–1020, 2011. doi:10.1152/jappphysiol.00293.2011.
61. Haman F, Péronnet F, Kenny GP, Massicotte D, Lavoie C, Scott C, Weber J-M. Effect of cold exposure on fuel utilization in humans: plasma glucose, muscle glycogen, and lipids. *J Appl Physiol (1985)* 93: 77–84, 2002. doi:10.1152/jappphysiol.00773.2001.
62. Blondin DP, Depault I, Imbeault P, Peronnet F, Imbeault MA, Haman F. Effects of two glucose ingestion rates on substrate utilization during moderate-intensity shivering. *Eur J Appl Physiol* 108: 289–300, 2010. doi:10.1007/s00421-009-1210-7.
63. Blondin DP, Peronnet F, Haman F. Effects of ingesting [13C]glucose early or late into cold exposure on substrate utilization. *J Appl Physiol (1985)* 109: 654–662, 2010. doi:10.1152/jappphysiol.00440.2010.
64. Blondin DP, Peronnet F, Haman F. Coingesting glucose and fructose in the cold potentiates exogenous CHO oxidation. *Med Sci Sports Exerc* 44: 1706–1714, 2012. doi:10.1249/MSS.0b013e318254e952.
65. Vallerand AL, Zamecnik J, Jacobs I. Plasma glucose turnover during cold stress in humans. *J Appl Physiol* 78: 1296–1302, 1995. doi:10.1152/jappl.1995.78.4.1296.
66. Vallerand AL, Jacobs I, Kavanagh MF. Mechanism of enhanced cold tolerance by an ephedrine-caffeine mixture in humans. *J Appl Physiol (1985)* 67: 438–444, 1989. doi:10.1152/jappl.1989.67.1.438.
67. Vallerand AL, Zamecnik J, Jones PJ, Jacobs I. Cold stress increases lipolysis, FFA Ra and TG/FFA cycling in humans. *Aviat Space Environ Med* 70: 42–50, 1999.
68. Vallerand AL, Jacobs I. Influence of cold exposure on plasma tri-glyceride clearance in humans. *Metabolism* 39: 1211–1218, 1990. doi:10.1016/0026-0495(90)90097-v.
69. Vallerand AL, Tikuisis P, Ducharme MB, Jacobs I. Is energy substrate mobilization a limiting factor for cold thermogenesis. *Eur J Appl Physiol* 67: 239–244, 1993. doi:10.1007/BF00864222.
70. Haman F, Péronnet F, Kenny GP, Massicotte D, Lavoie C, Weber J-M. Partitioning oxidative fuels during cold exposure in humans: muscle glycogen becomes dominant as shivering intensifies. *J Physiol* 566: 247–256, 2005. doi:10.1113/jphysiol.2005.086272.
71. Haman F, Scott CG, Kenny GP. Fueling shivering thermogenesis during passive hypothermic recovery. *J Appl Physiol (1985)* 103: 1346–1351, 2007. doi:10.1152/jappphysiol.00931.2006.
72. Tikuisis P, Jacobs I, Moroz D, Vallerand AL, Martineau L. Comparison of thermoregulatory responses between men and women immersed in cold water. *J Appl Physiol (1985)* 89: 1403–1411, 2000. doi:10.1152/jappl.2000.89.4.1403.
73. Martineau L, Jacobs I. Muscle glycogen utilization during shivering thermogenesis in humans. *J Appl Physiol (1985)* 65: 2046–2050, 1988. doi:10.1152/jappl.1988.65.5.2046.
74. Martineau L, Jacobs I. Muscle glycogen availability and temperature regulation in humans. *J Appl Physiol (1985)* 66: 72–78, 1989. doi:10.1152/jappl.1989.66.1.72.
75. Zweifler RM, Voorhees ME, Mahmood MA, Parnell M. Magnesium sulfate increases the rate of hypothermia via surface cooling and improves comfort. *Stroke* 35: 2331–2334, 2004. doi:10.1161/01.STR.0000141161.63181.fl.
76. Haman F, Péronnet F, Kenny GP, Doucet E, Massicotte D, Lavoie C, Weber J-M. Effects of carbohydrate availability on sustained shivering I: oxidation of plasma glucose, muscle glycogen and proteins. *J Appl Physiol* 96: 32–40, 2004. doi:10.1152/jappphysiol.00427.2003.
77. Martineau L, Jacobs I. Effects of muscle glycogen and plasma FFA availability on human metabolic responses in cold water. *J Appl Physiol (1985)* 71: 1331–1339, 1991. doi:10.1152/jappl.1991.71.4.1331.
78. Elia M. Organ and tissue contribution to metabolic rate. In: *Energy Metabolism Tissue Determinants and Cellular Corollaries*, edited by Kinney JM, Tucker HN. New York: Raven Press, 1992, p. 61–77.
79. Muller MJ, Wang Z, Heymsfield SB, Schautz B, Bosy-Westphal A. Advances in the understanding of specific metabolic rates of major organs and tissues in humans. *Curr Opin Clin Nutr Metab Care* 16: 501–508, 2013. doi:10.1097/MCO.0b013e328363bdf9.
80. Bartelt A, Bruns OT, Reimer R, Hohenberg H, Ittrich H, Peldschus K, Kaul MG, Tromsdorf UI, Weller H, Waurisch C, Eychmuller A, Gortds PL, Rinninger F, Bruegelmann K, Freund B, Nielsen P, Merkel M, Heeren J. Brown adipose tissue activity controls triglyceride clearance. *Nat Med* 17: 200–205, 2011. doi:10.1038/nm.2297.
81. Wang Z, Ying Z, Bosy-Westphal A, Zhang J, Heller M, Later W, Heymsfield SB, Muller MJ. Evaluation of specific metabolic rates of major organs and tissues: comparison between men and women. *Am J Hum Biol* 23: 333–338, 2011. doi:10.1002/ajhb.21137.
82. Rolfe DFS, Brown GC. Cellular energy utilization and molecular origin of standard metabolic rate in mammals. *Physiol Rev* 77: 731–758, 1997. doi:10.1152/physrev.1997.77.3.731.
83. Din MU, Saari T, Raiko J, Kudomi N, Maurer SF, Laheesmaa M, Fromme T, Amri EZ, Klingenspor M, Solin O, Nuutila P, Virtanen KA. Postprandial oxidative metabolism of human brown fat indicates thermogenesis. *Cell Metab* 28: 207–216.e3, 2018. doi:10.1016/j.cmet.2018.05.020.
84. Cannon B, Nedergaard J. Brown adipose tissue: function and physiological significance. *Physiol Rev* 84: 277–359, 2004. doi:10.1152/physrev.00015.2003.
85. Mawhinney C, Heinonen I, Low DA, Han C, Jones H, Kalliokoski KK, Kirjavainen A, Kempainen J, Di Salvo V, Weston M, Cable T, Gregson W. Changes in quadriceps femoris muscle perfusion following different degrees of cold-water immersion. *J Appl Physiol (1985)* 128: 1392–1401, 2020. doi:10.1152/jappphysiol.00833.2019.
86. Bell DG, Tikuisis P, Jacobs I. Relative intensity of muscular contraction during shivering. *J Appl Physiol (1985)* 72: 2336–2342, 1992. doi:10.1152/jappl.1992.72.6.2336.
87. Haman F, Legault SR, Rakobowchuk M, Ducharme MB, Weber J-M. Effects of carbohydrate availability on sustained shivering II: relating muscle recruitment to fuel selection. *J Appl Physiol (1985)* 96: 41–49, 2004 [Erratum in *J Appl Physiol* 96: 1576, 2004]. doi:10.1152/jappphysiol.00428.2003.

88. Haman F, Legault SR, Weber J-M. Fuel selection during intense shivering in humans: EMG pattern reflects carbohydrate oxidation. *J Physiol* 556: 305–313, 2004. doi:10.1113/jphysiol.2003.055152.
89. Bae KA, An NY, Kwon YW, Kim C, Yoon CS, Park SC, Kim CK. Muscle fibre size and capillarity in Korean diving women. *Acta Physiol Scand* 179: 167–172, 2003. doi:10.1046/j.1365-201X.2003.01185.x.
90. Gnaiger E, Boushel R, Sondergaard H, Munch-Andersen T, Damsgaard R, Hagen C, Diez-Sanchez C, Ara I, Wright-Paradis C, Schrauwen P, Hesselink M, Calbet JA, Christiansen M, Helge JW, Saltin B. Mitochondrial coupling and capacity of oxidative phosphorylation in skeletal muscle of Inuit and Caucasians in the arctic winter. *Scand J Med Sci Sports* 25, Suppl 4: 126–134, 2015. doi:10.1111/sms.12612.
91. Vincent AE, White K, Davey T, Phillips J, Ogden RT, Lawless C, Warren C, Hall MG, Ng YS, Falkous G, Holden T, Deehan D, Taylor RW, Turnbull DM, Picard M. Quantitative 3D mapping of the human skeletal muscle mitochondrial network. *Cell Rep* 27: 321, 2019. doi:10.1016/j.celrep.2019.03.051.
92. Dahl R, Larsen S, Dohmann TL, Qvortrup K, Helge JW, Dela F, Prats C. Three-dimensional reconstruction of the human skeletal muscle mitochondrial network as a tool to assess mitochondrial content and structural organization. *Acta Physiol (Oxf)* 213: 145–155, 2015. doi:10.1111/apha.12289.
93. Daemen S, Gemmink A, Brouwers B, Meex RCR, Huntjens PR, Schaart G, Moonen-Kornips E, Jorgensen J, Hoeks J, Schrauwen P, Hesselink MKC. Distinct lipid droplet characteristics and distribution unmask the apparent contradiction of the athlete's paradox. *Mol Metab* 17: 71–81, 2018. doi:10.1016/j.molmet.2018.08.004.
94. Jensen R, Ørtenblad N, Stausholm M-LH, Skjærbaek MC, Larsen DN, Hansen M, Holmberg H-C, Plomgaard P, Nielsen J. Heterogeneity in subcellular muscle glycogen utilisation during exercise impacts endurance capacity in men. *J Physiol* 598: 4271–4292, 2020. doi:10.1113/JP280247.
95. Blondin DP, Tingelstad HC, Mantha OL, Gosselin C, Haman F. Maintaining thermogenesis in cold exposed humans: relying on multiple metabolic pathways. *Compr Physiol* 4: 1383–1402, 2014. doi:10.1002/cphy.c130043.
96. Passias TC, Meneilly GS, Mekjavic IB. Effect of hypoglycemia on thermoregulatory responses. *J Appl Physiol* 80: 1021–1032, 1996. doi:10.1152/jappl.1996.80.3.1021.
97. Gale EA, Bennett T, Green JH, MacDonald IA. Hypoglycemia, hypothermia and shivering in man. *Clin Sci (Lond)* 61: 463–469, 1981. doi:10.1042/cs0610463.
98. Muzik O, Mangner TJ, Leonard WR, Kumar A, Janisse J, Granneman JG. 15O PET measurement of blood flow and oxygen consumption in cold-activated human brown fat. *J Nucl Med* 54: 523–531, 2013. doi:10.2967/jnumed.112.111336.
99. Sellers AJ, Pallubinsky H, Rense P, Bijmens W, van de Weijer T, Moonen-Kornips E, Schrauwen P, van Marken Lichtenbelt WD. The effect of cold exposure with shivering on glucose tolerance in healthy men. *J Appl Physiol (1985)* 130: 193–205, 2021. doi:10.1152/jappphysiol.00642.2020.
100. Russell RD, Hu D, Greenaway T, Sharman JE, Rattigan S, Richards SM, Keske MA. Oral glucose challenge impairs skeletal muscle microvascular blood flow in healthy people. *Am J Physiol Endocrinol Metab* 315: E307–E315, 2018. doi:10.1152/ajpendo.00448.2017.
101. Hall KD, Heymsfield SB, Kemnitz JW, Klein S, Schoeller DA, Speakman JR. Energy balance and its components: implications for body weight regulation. *Am J Clin Nutr* 95: 989–994, 2012 [Erratum in *Am J Clin Nutr* 96: 448, 2012]. doi:10.3945/ajcn.112.036350.
102. Carpentier AC. Abnormal myocardial dietary fatty acid metabolism and diabetic cardiomyopathy. *Can J Cardiol* 34: 605–614, 2018. doi:10.1016/j.cjca.2017.12.029.
103. Poitout V, Amyot J, Semache M, Zarrouki B, Hagman D, Fontes G. Glucolipotoxicity of the pancreatic beta cell. *Biochim Biophys Acta* 1801: 289–298, 2010. doi:10.1016/j.bbaliip.2009.08.006.
104. Muoio DM, Newgard CB. Mechanisms of disease: molecular and metabolic mechanisms of insulin resistance and beta-cell failure in type 2 diabetes. *Nat Rev Mol Cell Biol* 9: 193–205, 2008. doi:10.1038/nrm2327.
105. Grenier-Larouche T, Labbe SM, Noll C, Richard D, Carpentier AC. Metabolic inflexibility of white and brown adipose tissues in abnormal fatty acid partitioning of type 2 diabetes. *Int J Obes Suppl* 2: S37–S42, 2012. doi:10.1038/ijosup.2012.21.
106. Khera R, Murad MH, Chandar AK, Dulai PS, Wang Z, Prokop LJ, Loomba R, Camilleri M, Singh S. Association of pharmacological treatments for obesity with weight loss and adverse events: a systematic review and meta-analysis. *JAMA* 315: 2424–2434, 2016. doi:10.1001/jama.2016.7602.
107. Speakman JR, Heidari-Bakavoli S. Type 2 diabetes, but not obesity, prevalence is positively associated with ambient temperature. *Sci Rep* 6: 30409, 2016. doi:10.1038/srep30409.
108. Booth GL, Luo J, Park AL, Feig DS, Moineddin R, Ray JG. Influence of environmental temperature on risk of gestational diabetes. *CMAJ* 189: E682–E689, 2017. doi:10.1503/cmaj.160839.
109. Scholander PF, Hammel HT, Hart JS, Le Messurier DH, Steen J. Cold adaptation in Australian aborigine. *J Appl Physiol* 13: 211–218, 1958. doi:10.1152/jappl.1958.13.2.211.
110. van Dijk JW, Manders RJ, Tummers K, Bonomi AG, Stehouwer CD, Hartgens F, van Loon LJ. Both resistance- and endurance-type exercise reduce the prevalence of hyperglycaemia in individuals with impaired glucose tolerance and in insulin-treated and non-insulin-treated type 2 diabetic patients. *Diabetologia* 55: 1273–1282, 2012. doi:10.1007/s00125-011-2380-5.
111. Minuk HL, Vranic M, Marliss EB, Hanna AK, Albisser AM, Zinman B. Glucoregulatory and metabolic response to exercise in obese noninsulin-dependent diabetes. *Am J Physiol Endocrinol Metab* 240: E458–E464, 1981. doi:10.1152/ajpendo.1981.240.5.E458.
112. Giacca A, Groenewoud Y, Tsui E, McClean P, Zinman B. Glucose production, utilization, and cycling in response to moderate exercise in obese subjects with type 2 diabetes and mild hyperglycemia. *Diabetes* 47: 1763–1770, 1998. doi:10.2337/diabetes.47.11.1763.
113. Kang J, Robertson RJ, Hagberg JM, Kelley DE, Goss FL, DaSilva SG, Suminski RR, Utter AC. Effect of exercise intensity on glucose and insulin metabolism in obese individuals and obese NIDDM patients. *Diabetes Care* 19: 341–349, 1996. doi:10.2337/diacare.19.4.341.
114. Hubinger A, Franzen A, Gries FA. Hormonal and metabolic response to physical exercise in hyperinsulinemic and non-hyperinsulinemic type 2 diabetics. *Diabetes Res* 4: 57–61, 1987.
115. Hanssen MJ, Hoeks J, Brans B, van der Lans AA, Schaart G, van den Driessche JJ, Jorgensen JA, Boekschoten MV, Hesselink MK, Havekes B, Kersten S, Mottaghy FM, van Marken Lichtenbelt WD, Schrauwen P. Short-term cold acclimation improves insulin sensitivity in patients with type 2 diabetes mellitus. *Nat Med* 21: 863–865, 2015. doi:10.1038/nm.3891.
116. Hanssen MJ, van der Lans AA, Brans B, Hoeks J, Jardon KM, Schaart G, Mottaghy FM, Schrauwen P, van Marken Lichtenbelt WD. Short-term cold acclimation recruits brown adipose tissue in obese humans. *Diabetes* 65: 1179–1189, 2016. doi:10.2337/db15-1372.
117. The Eurowinter Group. Cold exposure and winter mortality from ischaemic heart disease, cerebrovascular disease, respiratory disease, and all causes in warm and cold regions of Europe. *Lancet* 349: 1341–1346, 1997.
118. Raiko J, Orava J, Savisto N, Virtanen KA. High brown fat activity correlates with cardiovascular risk factor levels cross-sectionally and subclinical atherosclerosis at 5-year follow-up. *Arterioscler Thromb Vasc Biol* 40: 1289–1295, 2020. doi:10.1161/ATVBAHA.119.313806.
119. Ikaheimo TM, Jokelainen J, Nayha S, Laatikainen T, Jousilahti P, Laukkanen J, Jaakkola JJK. Cold weather-related cardiorespiratory symptoms predict higher morbidity and mortality. *Environ Res* 191: 110108, 2020. doi:10.1016/j.envres.2020.110108.
120. Gasparrini A, Guo Y, Hashizume M, Lavigne E, Zanobetti A, Schwartz J, Tobias A, Tong S, Rocklöv J, Forsberg B, Leone M, De Sario M, Bell ML, Guo YL, Wu CF, Kan H, Yi SM, de Sousa Zanotti Stagliorio Coelho M, Saldiva PH, Honda Y, Kim H, Armstrong B. Mortality risk attributable to high and low ambient temperature: a multicountry observational study. *Lancet* 386: 369–375, 2015. doi:10.1016/S0140-6736(14)62114-0.
121. Bakker LE, Boon MR, van der Linden RA, Arias-Bouda LP, van Klinken JB, Smit F, Verberne HJ, Jukema JW, Tamsma JT, Havekes LM, van Marken Lichtenbelt WD, Jazet IM, Rensen PC. Brown adipose tissue volume in healthy lean south Asian adults compared with white Caucasians: a prospective, case-controlled observational study. *Lancet Diabetes Endocrinol* 2: 210–217, 2014. doi:10.1016/S2213-8587(13)70156-6.
122. Weir G, Ramage LE, Akyol M, Rhodes JK, Kyle CJ, Fletcher AM, Craven TH, Wakelin SJ, Drake AJ, Gregoriades ML, Ashton C, Weir

- N, van Beek EJR, Karpe F, Walker BR, Stimson RH.** Substantial metabolic activity of human brown adipose tissue during warm conditions and cold-induced lipolysis of local triglycerides. *Cell Metab* 27: 1348–1355.e4, 2018. doi:10.1016/j.cmet.2018.04.020.
123. **Kingma BR, Frijns AJ, Saris WH, van Steenhoven AA, Lichtenbelt WD.** Increased systolic blood pressure after mild cold and rewarming: relation to cold-induced thermogenesis and age. *Acta Physiol (Oxf)* 203: 419–427, 2011. doi:10.1111/j.1748-1716.2011.02336.x.
124. **Mengel LA, Seidl H, Brandl B, Skurk T, Holzapfel C, Stecher L, Claussnitzer M, Hauner H.** Gender differences in the response to short-term cold exposure in young adults. *J Clin Endocrinol Metab* 105: dgaa110, 2020. doi:10.1210/clinem/dgaa110.
125. **Hintsala H, Kandelberg A, Herzig KH, Rintamäki H, Mäntysaari M, Rantala A, Antikainen R, Keinänen-Kiukaanniemi S, Jaakkola JJ, Ikäheimo TM.** Central aortic blood pressure of hypertensive men during short-term cold exposure. *Am J Hypertens* 27: 656–664, 2014. doi:10.1093/ajh/hpt136.
126. **Raven PB, Niki I, Dahms TE, Horvath SM.** Compensatory cardiovascular responses during an environmental cold stress, 5 degrees C. *J Appl Physiol* 29: 417–421, 1970. doi:10.1152/jappl.1970.29.4.417.
127. **Korhonen I.** Blood pressure and heart rate responses in men exposed to arm and leg cold pressor tests and whole-body cold exposure. *Int J Circumpolar Health* 65: 178–184, 2006. doi:10.3402/ijch.v65i2.18090.
128. **Arnett EL, Watts DT.** Catecholamine excretion in men exposed to cold. *J Appl Physiol* 15: 499–500, 1960. doi:10.1152/jappl.1960.15.3.499.
129. **O'Hanlon JF Jr, Horvath SM.** Changing physiological relationships in men under acute cold stress. *Can J Physiol Pharmacol* 48: 1–10, 1970. doi:10.1139/y70-001.
130. **Greaney JL, Stanhewicz AE, Kenney WL, Alexander LM.** Muscle sympathetic nerve activity during cold stress and isometric exercise in healthy older adults. *J Appl Physiol (1985)* 117: 648–657, 2014. doi:10.1152/japplphysiol.00516.2014.
131. **Greaney JL, Kenney WL, Alexander LM.** Sympathetic function during whole body cooling is altered in hypertensive adults. *J Appl Physiol (1985)* 123: 1617–1624, 2017. doi:10.1152/japplphysiol.00613.2017.
132. **Miyai N, Arita M, Miyashita K, Morioka I, Shiraishi T, Nishio I.** Blood pressure response to heart rate during exercise test and risk of future hypertension. *Hypertension* 39: 761–766, 2002. doi:10.1161/hy0302.105777.
133. **Whelton SP, Chin A, Xin X, He J.** Effect of aerobic exercise on blood pressure: a meta-analysis of randomized, controlled trials. *Ann Intern Med* 136: 493–503, 2002.
134. **Schrauwen P, van Marken Lichtenbelt WD.** Combatting type 2 diabetes by turning up the heat. *Diabetologia* 59: 2269–2279, 2016. doi:10.1007/s00125-016-4068-3.
135. **Wagner JA, Horvath SM.** Cardiovascular reactions to cold exposures differ with age and gender. *J Appl Physiol (1985)* 58: 187–192, 1985. doi:10.1152/jappl.1985.58.1.187.
136. **Hanna JN, Hill PM, Sinclair JD.** Human cardiorespiratory responses to acute cold exposure. *Clin Exp Pharmacol Physiol* 2: 229–238, 1975. doi:10.1111/j.1440-1681.1975.tb03028.x.
137. **Castellani JW, Tipton MJ.** Cold stress effects on exposure tolerance and exercise performance. *Compr Physiol* 6: 443–469, 2015. doi:10.1002/cphy.c140081.
138. **Sun L, Yan J, Goh HJ, Govindharajulu P, Verma S, Michael N, Sadananthan SA, Henry CJ, Velan SS, Leow MK.** Fibroblast growth factor-21, leptin, and adiponectin responses to acute cold-induced brown adipose tissue activation. *J Clin Endocrinol Metab* 105: e520–e531, 2020. doi:10.1210/clinem/dgaa005.
139. **Gibas-Dorna M, Checinska Z, Korek E, Kupsz J, Sowinska A, Wojciechowska M, Krauss H, Piatek J.** Variations in leptin and insulin levels within one swimming season in non-obese female cold water swimmers. *Scand J Clin Lab Invest* 76: 486–491, 2016. doi:10.1080/00365513.2016.1201851.
140. **Hiramatsu K, Yamada T, Katakura M.** Acute effects of cold on blood pressure, renin-angiotensin-aldosterone system, catecholamines and adrenal steroids in man. *Clin Exp Pharmacol Physiol* 11: 171–179, 1984. doi:10.1111/j.1440-1681.1984.tb00254.x.
141. **Ricci MR, Fried SK, Mittleman KD.** Acute cold exposure decreases plasma leptin in women. *Metabolism* 49: 421–423, 2000. doi:10.1016/S0026-0495(00)80001-3.
142. **Hassi J, Rintamäki H, Ruskoaho H, Leppaluoto J, Vuolteenaho O.** Plasma levels of endothelin-1 and atrial natriuretic peptide in men during a 2-hour stay in a cold room. *Acta Physiol Scand* 142: 481–485, 1991. doi:10.1111/j.1748-1716.1991.tb09183.x.
143. **De Lorenzo F, Mukherjee M, Kadziola Z, Sherwood R, Kakkar VV.** Central cooling effects in patients with hypercholesterolaemia. *Clin Sci (Lond)* 95: 213–217, 1998. doi:10.1042/CS19980091.
144. **Bokenes L, Alexandersen TE, Tveita T, Osterud B, Mercer JB.** Physiological and hematological responses to cold exposure in young subjects. *Int J Circumpolar Health* 63: 115–128, 2004. doi:10.3402/ijch.v63i2.17698.
145. **Mercer JB, Osterud B, Tveita T.** The effect of short-term cold exposure on risk factors for cardiovascular disease. *Thromb Res* 95: 93–104, 1999. doi:10.1016/s0049-3848(99)00028-6.
146. **Brazaitis M, Eimantas N, Daniuseviciute L, Baranauskiene N, Skrodeniene E, Skurvydas A.** Time course of physiological and psychological responses in humans during a 20-day severe-cold-acclimation programme. *PLoS One* 9: e94698, 2014. doi:10.1371/journal.pone.0094698.
147. **Chondronikola M, Porter C, Malagaris I, Nella AA, Sidossis LS.** Brown adipose tissue is associated with systemic concentrations of peptides secreted from the gastrointestinal system and involved in appetite regulation. *Eur J Endocrinol* 177: 33–40, 2017. doi:10.1530/EJE-16-0958.
148. **Lee P, Linderman JD, Smith S, Brychta RJ, Wang J, Idelson C, Perron RM, Werner CD, Phan GQ, Kammula US, Kebebew E, Pacak K, Chen KY, Celi FS.** Irisin and FGF21 are cold-induced endocrine activators of brown fat function in humans. *Cell Metab* 19: 302–309, 2014. doi:10.1016/j.cmet.2013.12.017.